

Journal of Space Philosophy Sponsors

By JSP Editors

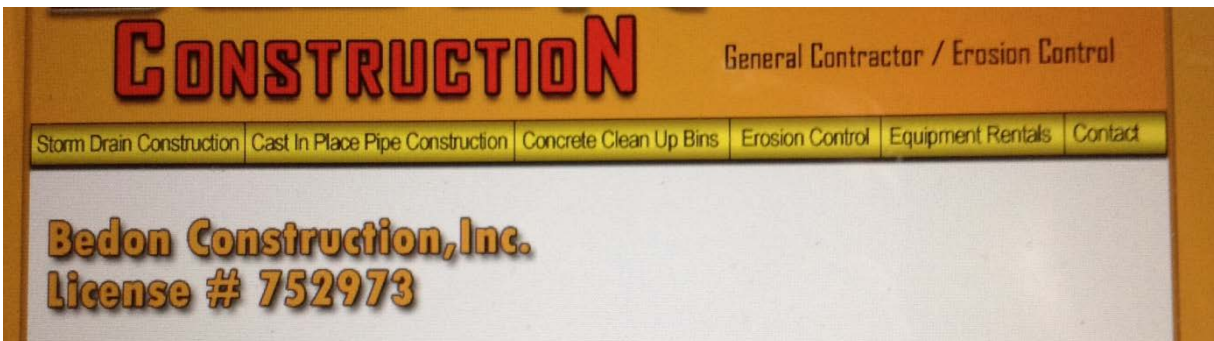


The Board of Directors of the Kepler Space Institute recognizes the generous donations of the following companies and individual to finance the *Journal of Space Philosophy*:

- Bedon Inc., Construction Company, Temecula, California, Don Parker, President
- Automotive Repair, Singapore, Hosain Bahari, President
- Dr. Sherry Bell
- Dr. and Mrs. Bob Krone
- Smart Fleet, Inc. Joseph Sobodowski, CEO.

See information in the following pages

- **Bedon Inc., Construction Company,
Temecula, California, Don Parker, President**



CAST-IN-PLACE PIPE (CIPP)

At 30 plus years, Cast-In-Place Pipe (cipp) technology is a viable pipe-laying process that enables Bedon Construction to install storm drain pipe at considerable cost savings over traditional methods, Cost savings average 25-50% compared to precast pipe.

We own all the equipment necessary to pour 24" to 120" pipe. We have experienced personnel on staff to construct your pipeline quickly so that your project can be completed with both time and cost savings.

Our staff civil engineer can work with your engineers and the public agencies to prepare your plans for the use of Cast-In-place Pipe.

CAST-IN-PLACE specifications Pipe Dia. Wall Thickness Normal Yield bucket Width Min Radius For curves Pipe Zone Spoils.

A photograph showing a yellow truck equipped with a large pipe-laying apparatus. The truck is positioned on a dirt road, and a long, flexible pipe is being fed into a trench. The background shows a clear sky and some distant structures, indicating an outdoor construction site.

- **Bedon Construction, Inc.: Today on Earth – Tomorrow in Space**



- **Automotive Repair, Singapore, Hosain Bahari, President**



- **Dr. Sherry Bell**



Dean of Psychology at Kepler Space Institute and
long-time ISDC planner with the National Space
Society

- **Dr. and Mrs. Bob Krone**



See the dedication of this issue
to the memory of Sue Krone

- **Smart Fleet, Inc. Joseph Sobodowski, CEO.**